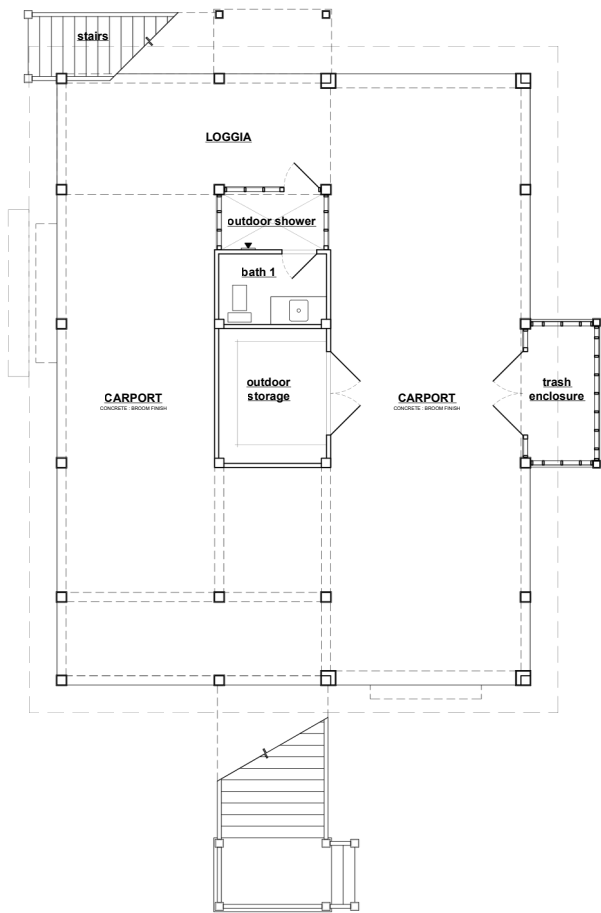


# CANAL COVE

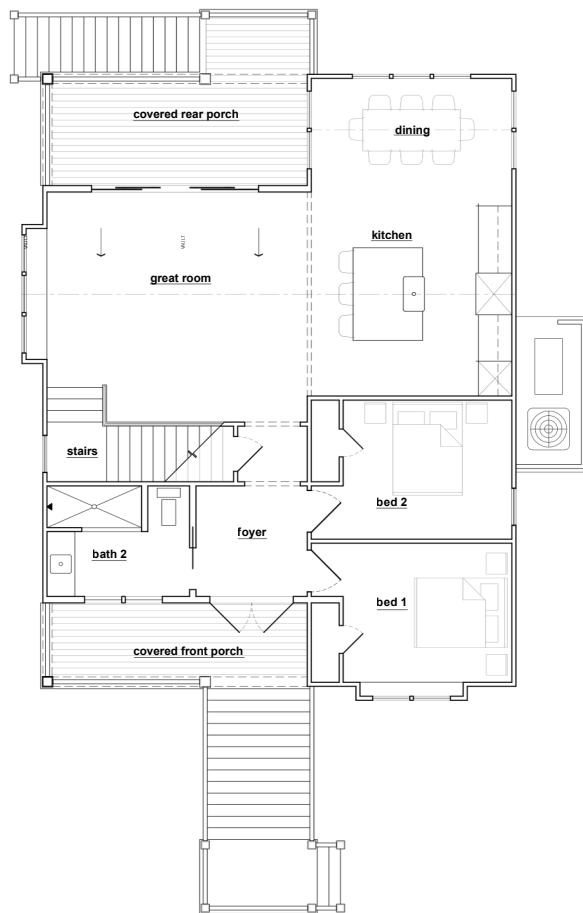


- TOTAL HEATED = 1810 SF**
- 3 BEDROOMS**
- 3 BATHS**
- 3 STORIES**
- 3 CARS**

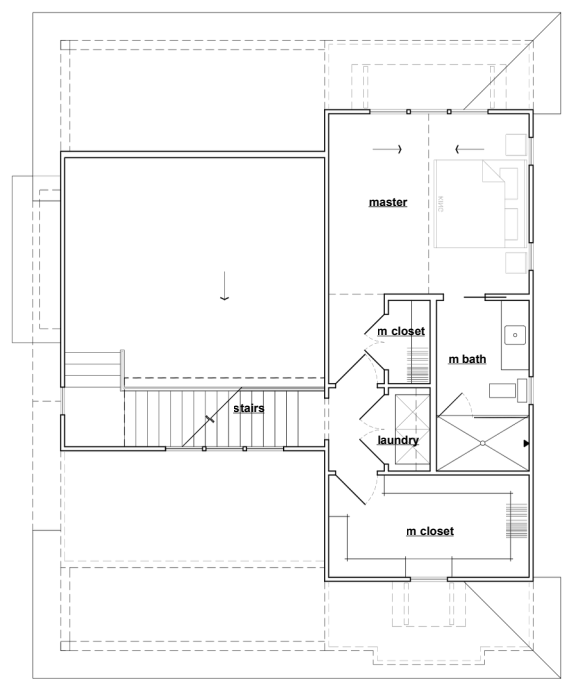
*\*Ask about alternate elevations*



**First Floor**



**Second Floor**



**Third Floor**

## SQUARE FOOTAGE

- FIRST FLOOR HEATED = 1253 SF
- SECOND FLOOR HEATED = 510 SF
- CARPORT = 1326 SF
- FRONT PORCH - 115 SF
- REAR PORCH = 155 SF
- OUTDOOR SHOWER = 40 SF
- OUTDOOR STORAGE & BATH = 130 SF
- TRASH ENCLOSURE = 60 SF

## DIMENSIONS

- WIDTH: 39'
- DEPTH: 64'8"

**252.541.0459**

**BANKSBUILDERSNC.COM**

**BANKSBUILDERSNC@GMAIL.COM**