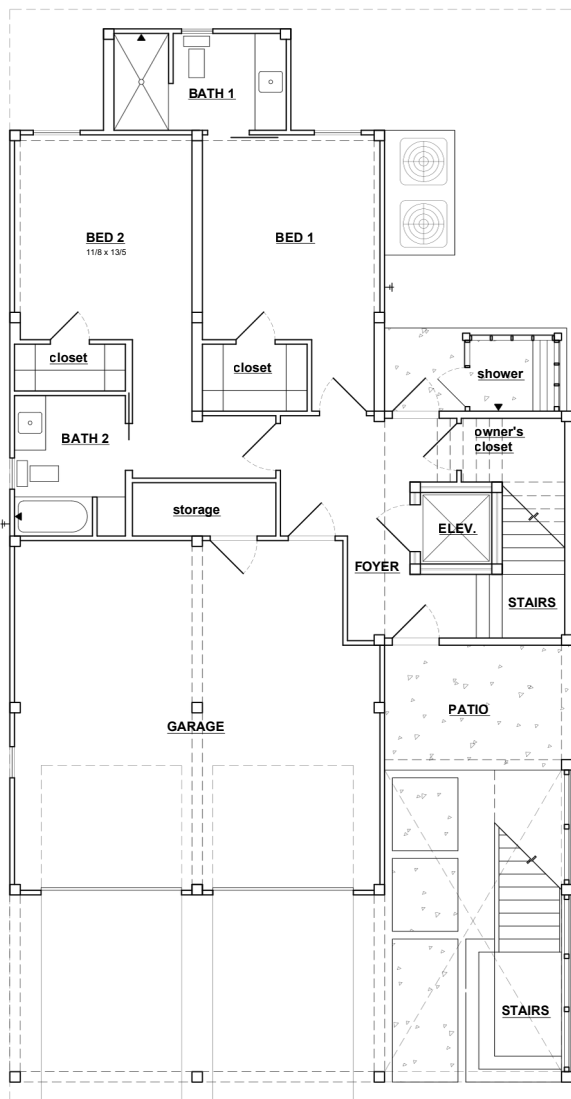


# KURE

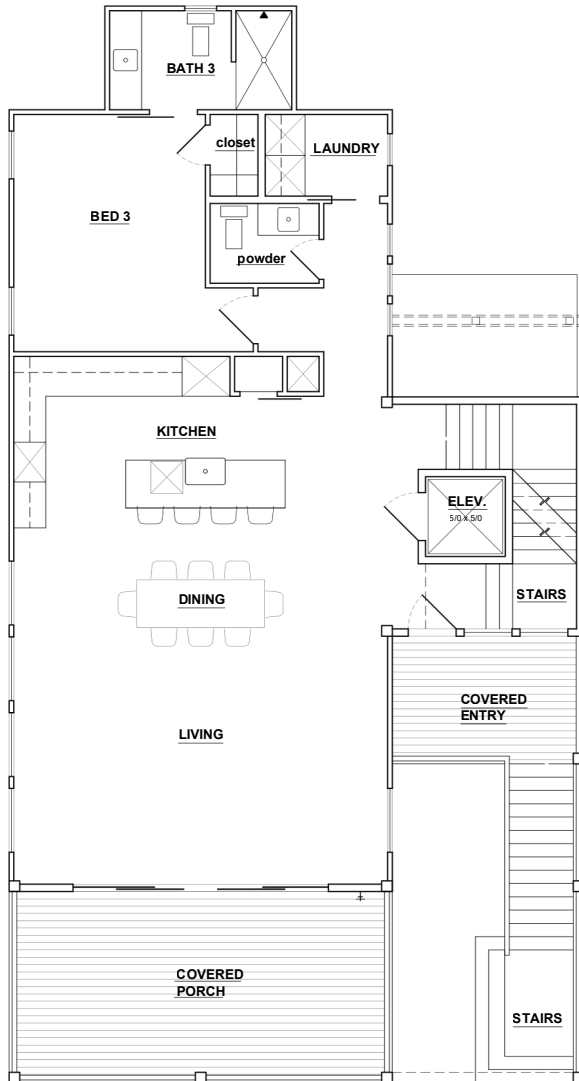


- TOTAL HEATED = 3300 SF**
- 5 1/2 BEDROOMS**
- 5 1/2 BATHS**
- 3 STORIES**
- 2 CARS**

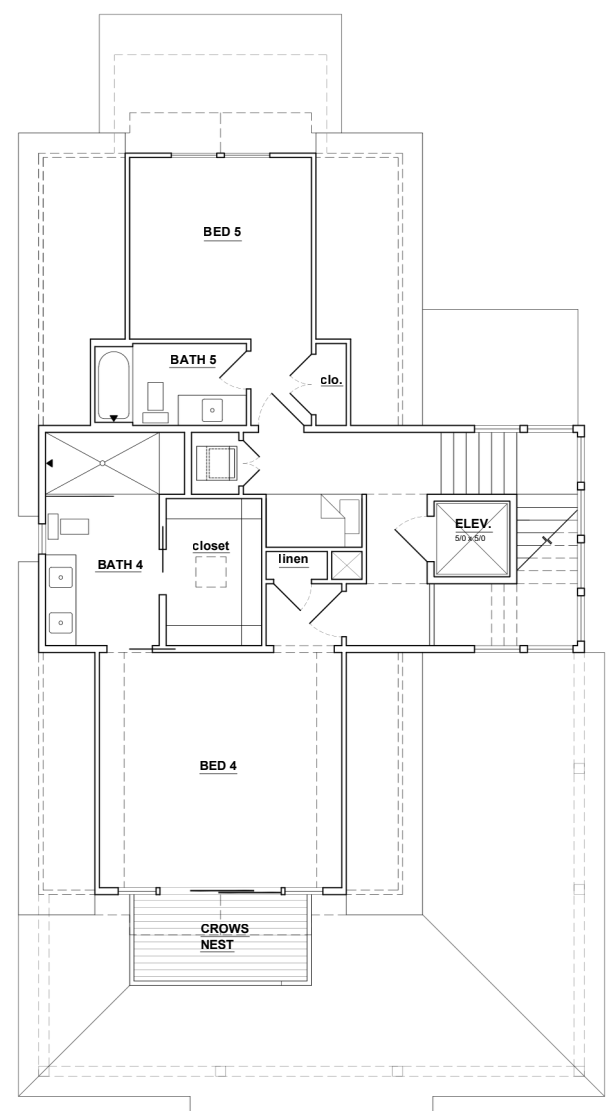
*\*Ask about alternate elevations*



**First Floor**



**Second Floor**



**Third Floor**

## SQUARE FOOTAGE

- FIRST FLOOR HEATED = 880 SF
- SECOND FLOOR HEATED = 1400 SF
- THIRD FLOOR HEATED = 1020 SF
- TORAGE = 45 SF
- GARAGE = 530 SF
- MECHANICAL PLATFORM = 55 SF
- COVERED PORCH = 385 SF
- CROWS NEST = 70 SF

## DIMENSIONS

- WIDTH: 36'
- DEPTH: 67'6"

**252.541.0459**

**BANKSBUILDERSNC.COM**

**BANKSBUILDERSNC@GMAIL.COM**