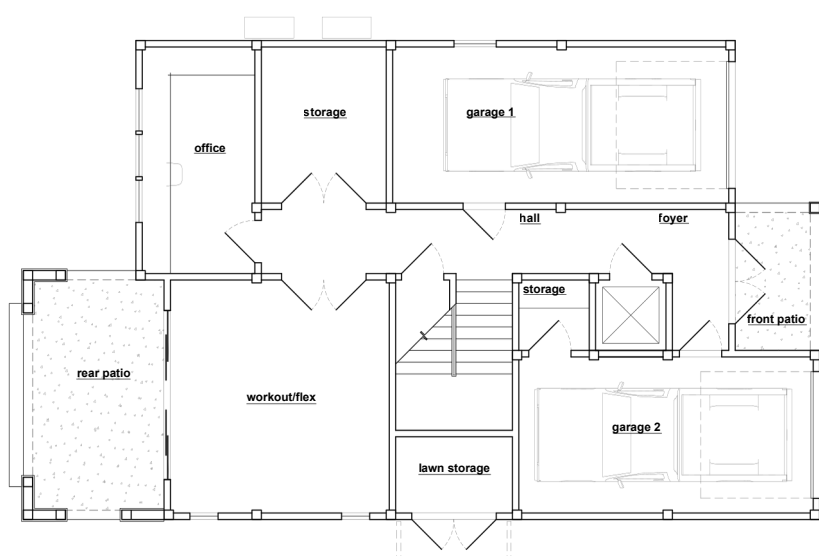


SOUTH PORT



- TOTAL HEATED = 2870 SF**
- 4 BEDROOMS**
- 3 BATHS**
- 3 STORIES**
- 2 CARS**

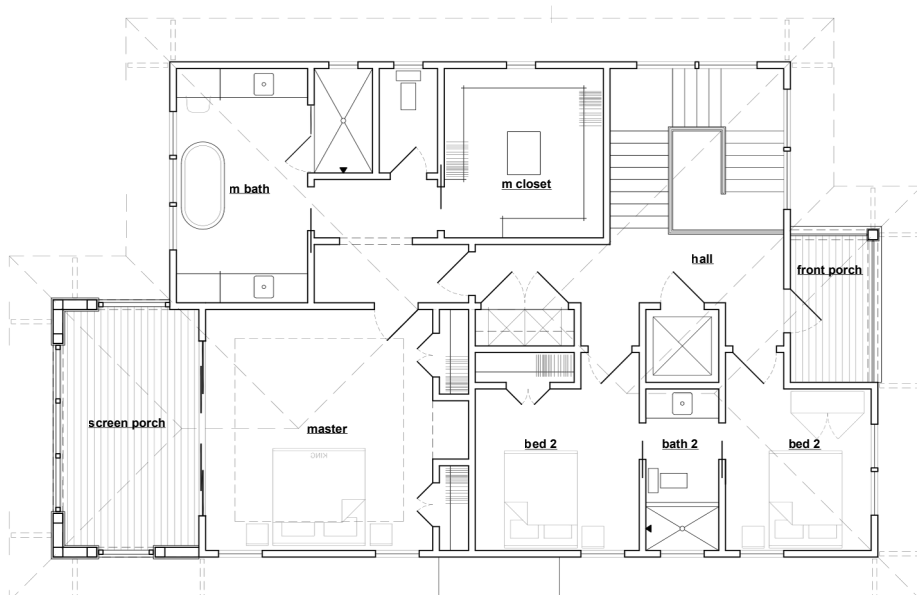
**Ask about alternate elevations*



First Floor



Second Floor



Third Floor

DIMENSIONS

WIDTH: 34'

DEPTH: 56'7"

SQUARE FOOTAGE

FIRST FLOOR HEATED = 290 SF

GARAGES = 500 SF

STORAGE = 170 SF

WORKOUT/FLEX = 255 SF

OFFICE = 130 SF

REAR PATIO = 175 SF

FRONT PATIO = 65

SECOND FLOOR HEATED = 1235 SF

SECOND FLOOR FRONT PORCH = 65 SF

SECOND FLOOR SCREEN PORCH = 175 SF

THIRD FLOOR HEATED = 1345 SF

THIRD FLOOR FRONT PORCH = 65 SF

THIRD FLOOR SCREEN PORCH = 175 SF

252.541.0459

BANKSBUILDERSNC.COM

BANKSBUILDERSNC@GMAIL.COM