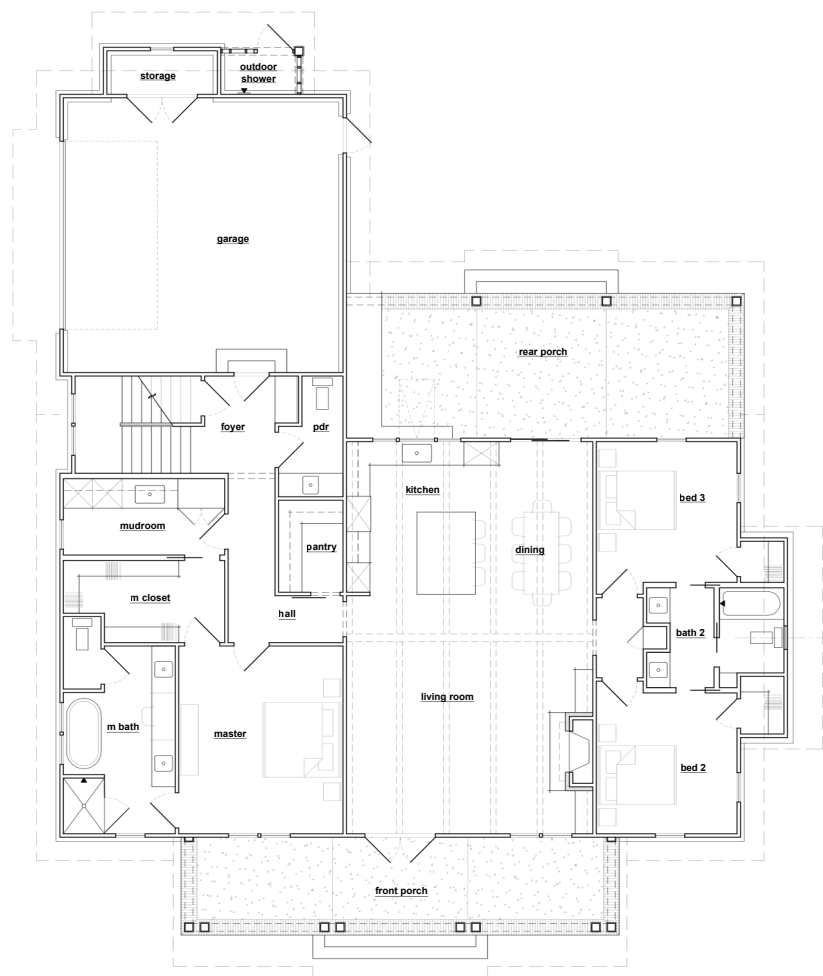


OSAGE

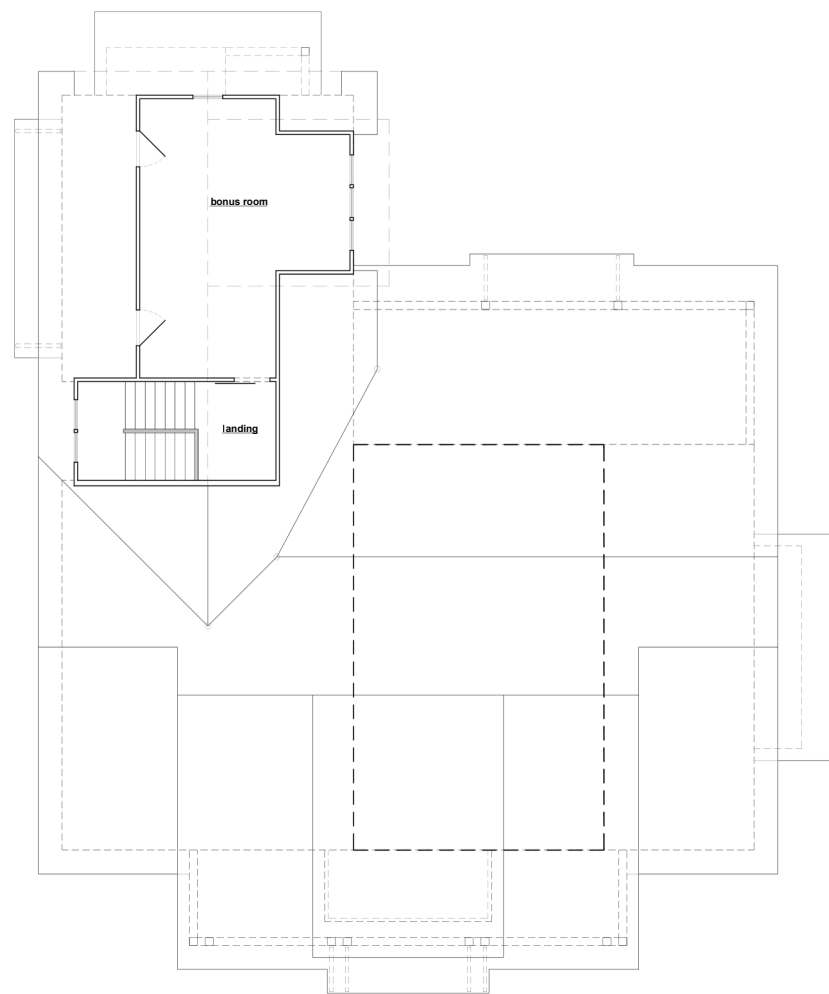


- TOTAL HEATED = 2600 SF**
- 3 BEDROOMS**
- 2 ½ BATHS**
- 1 ½ STORIES**
- 2 CARS**

**Ask about alternate elevations*



First Floor



Second Floor

SQUARE FOOTAGE

- FIRST FLOOR HEATED = 2180 SF
- BONUS ROOM HEATED = 420 SF
- STORAGE/SHOWER = 70 SF
- GARAGE = 580 SF
- FRONT PORCH = 290 SF
- REAR PORCH = 400 SF

DIMENSIONS

- WIDTH: 62'
- DEPTH: 75' 3 ½"

252.541.0459

BANKSBUILDERSNC.COM

BANKSBUILDERSNC@GMAIL.COM